

Hampshire Water Transfer and Water Recycling Project Environmental Statement - Figure 13.3 Geology

VOLUME NUMBER: 6

PLANNING INSPECTORATE SCHEME NUMBER: WA010002

APPLICATION DOCUMENT REFERENCE: 6.3

APFP REGULATION: 5(2)(a)

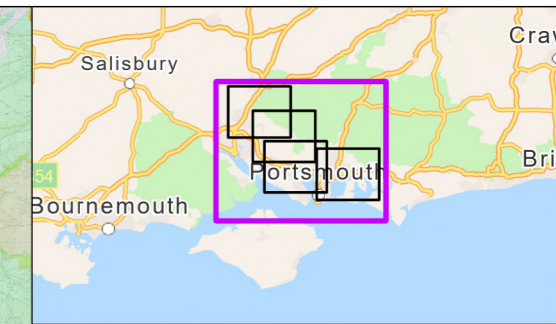
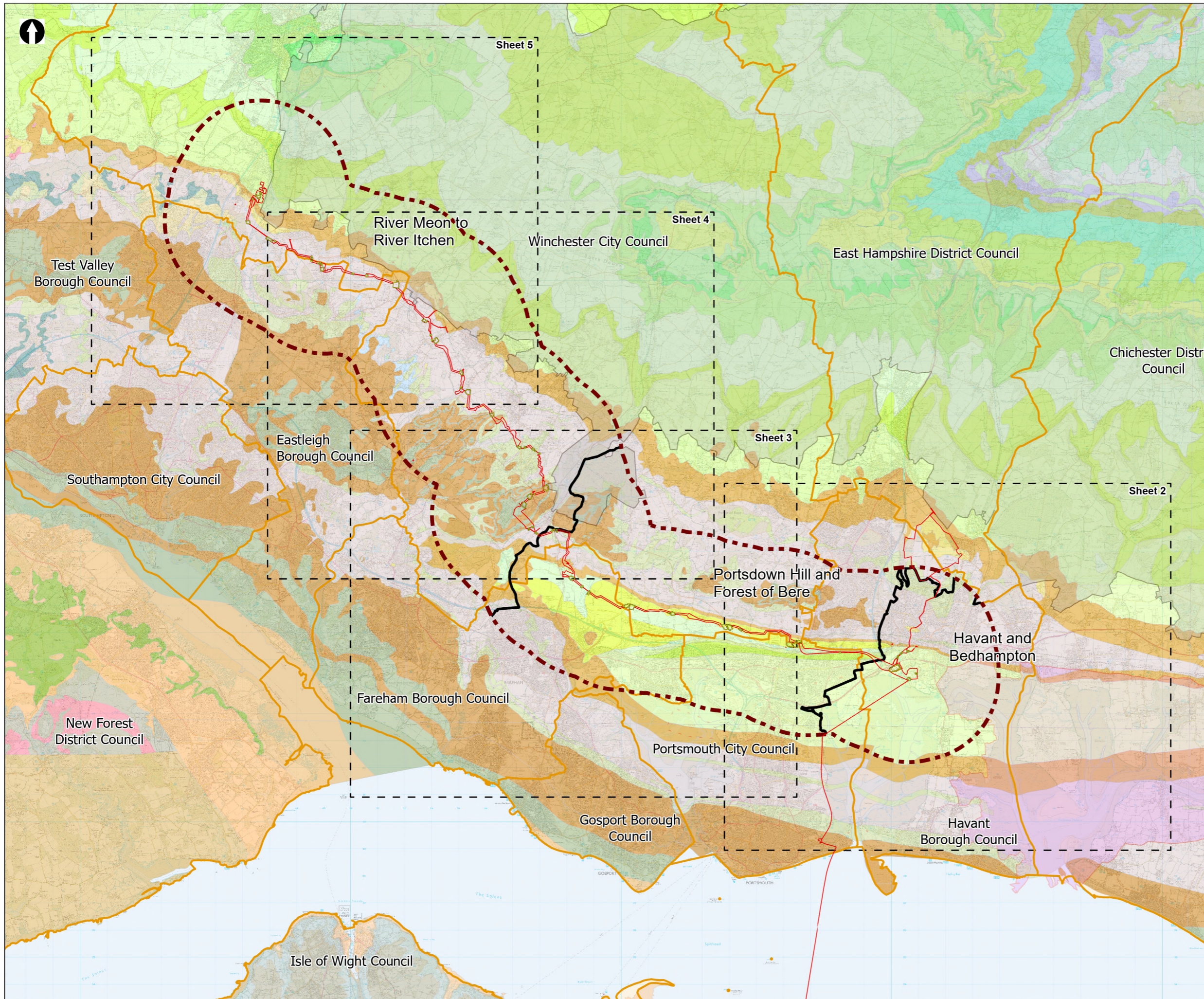
May 2026

Version 0



from
**Southern
Water** 

The Southern Water logo consists of the words 'Southern' and 'Water' stacked vertically in a blue, sans-serif font. To the right of the word 'Water' is a graphic element consisting of three stylized, wavy blue lines representing water.



- Order Limits
 - Landscape Study Area 3km
 - Principal sections within the study area
 - Sheet extent boxes 1:50k
 - Local planning authorities
 - South Downs National Park
 - Chichester Harbour National Landscape
 - Water Recycling Plant Site
 - Construction compounds
- Bedrock Geology 1:50000**
- Lambeth Group - Clay, Silt and Sand
 - Tarrant Chalk Member - Chalk
 - London Clay Formation - Sand
 - London Clay Formation - Clay, Silt and Sand
 - Lambeth Group - Sand
 - Bognor Sand Member - Sand
 - Wittering Formation - Sand, Silt and Clay
 - Wittering Formation - Sand
 - Whitecliff Sand Member - Sand
 - Portsdown Chalk Formation - Chalk
 - Lewes Nodular, Seaford, Newhaven, Culver, Portsdown Chalk Formation
 - Newhaven Chalk Formation
 - Spetsbury Chalk Member - Chalk
 - Lambeth Group - Clay, Silt and Sand
 - Earnley Sand Formation - Sand, Silt, and Clay
 - Seaford Chalk Formation - Chalk
 - Durnley Sand Member - Sand
 - Lewes Nodular Chalk Formation - Chalk
 - Culver Chalk Formation - Chalk
 - Nursling Sand Member - Clay, Silt and Sand
 - Whitecliff Sand Member - Sand and Gravel
 - Portsmouth and Whitecliff Sand Member - Sand

Coordinate system: British National Grid; Datum: OSGB 1936
 Data sources: © Crown copyright and database rights 2026 Ordnance Survey 0100031673. Sources: Esri, TomTom, Garmin, FAO, NOAA, USGS, © OpenStreetMap contributors, and the GIS User Community, Contains British Geological Survey materials © UKRI 2026.

PROJECT TITLE
 Hampshire Water Transfer and Water Recycling Project

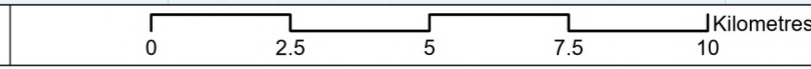


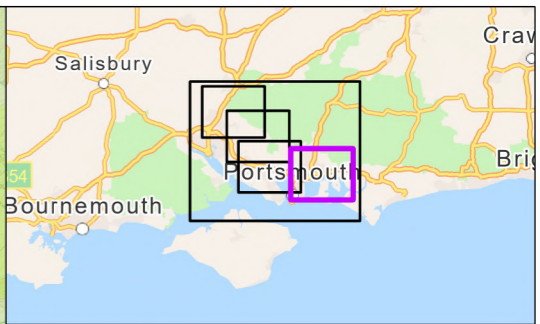
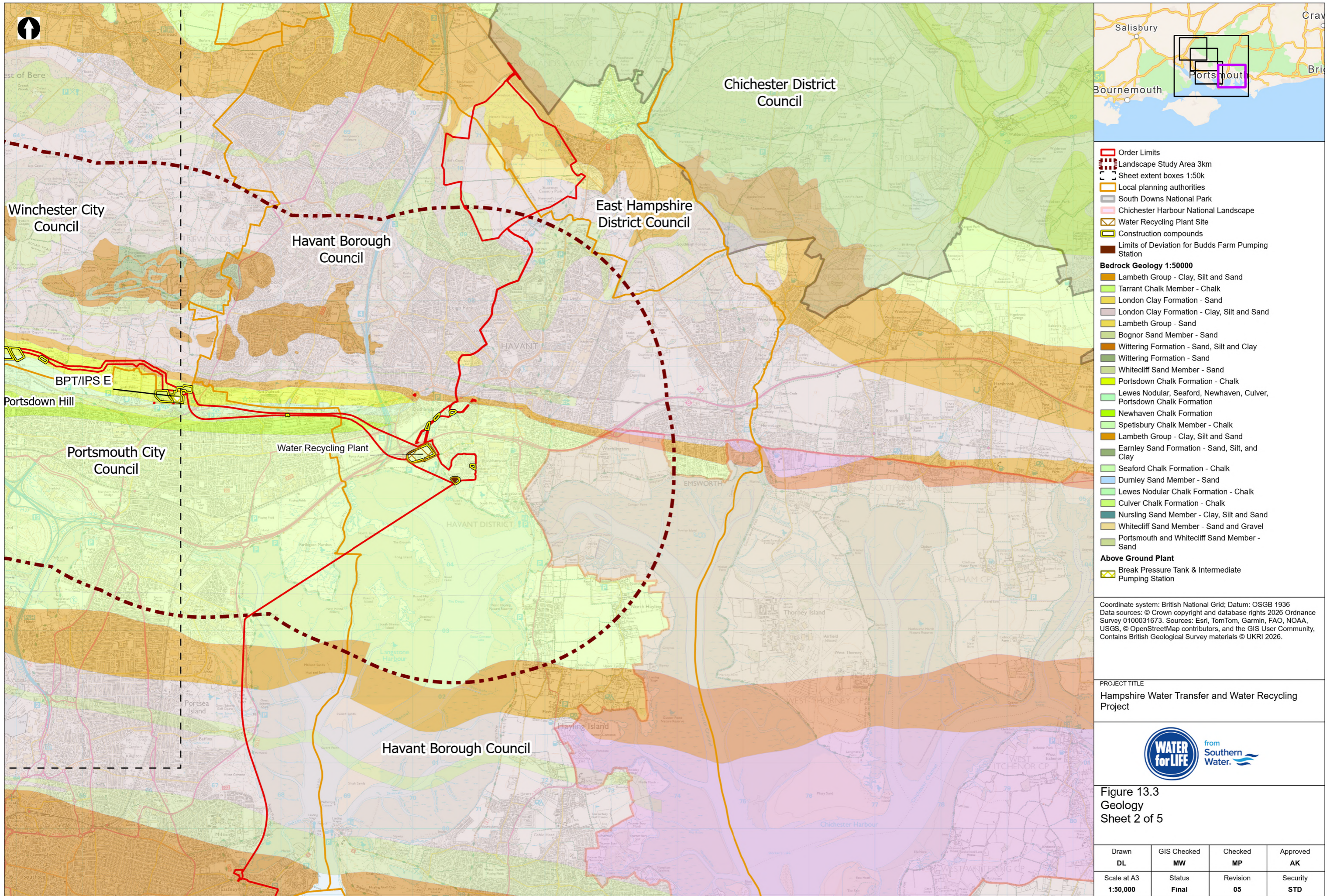
Figure 13.3
 Geology
 Sheet 1 of 5

Drawn DL	GIS Checked MW	Checked MP	Approved AK
Scale at A3 1:136,000	Status Final	Revision 05	Security STD

Drawing Number
PC5223-RHD-ES-ZZ-D-Z-0130

© Southern Water 2026
 This document is issued for the party which commissioned it and for specific purposes connected with the captioned project only. It should not be relied upon by any other party or used for any other purpose. We accept no responsibility for the consequences of this document being relied upon by any other party, or being used for any other purpose, or containing any error or omission which is due to an error or omission in data supplied to us by other parties.





- Order Limits
- Landscape Study Area 3km
- Sheet extent boxes 1:50k
- Local planning authorities
- South Downs National Park
- Chichester Harbour National Landscape
- Water Recycling Plant Site
- Construction compounds
- Limits of Deviation for Budds Farm Pumping Station
- Bedrock Geology 1:50000**
- Lambeth Group - Clay, Silt and Sand
- Tarrant Chalk Member - Chalk
- London Clay Formation - Sand
- London Clay Formation - Clay, Silt and Sand
- Lambeth Group - Sand
- Bognor Sand Member - Sand
- Wittering Formation - Sand, Silt and Clay
- Wittering Formation - Sand
- Whitecliff Sand Member - Sand
- Portsdown Chalk Formation - Chalk
- Lewes Nodular, Seaford, Newhaven, Culver, Portsdown Chalk Formation
- Newhaven Chalk Formation
- Spetisbury Chalk Member - Chalk
- Lambeth Group - Clay, Silt and Sand
- Earmley Sand Formation - Sand, Silt, and Clay
- Seaford Chalk Formation - Chalk
- Durnley Sand Member - Sand
- Lewes Nodular Chalk Formation - Chalk
- Culver Chalk Formation - Chalk
- Nursling Sand Member - Clay, Silt and Sand
- Whitecliff Sand Member - Sand and Gravel
- Portsmouth and Whitecliff Sand Member - Sand
- Above Ground Plant**
- Break Pressure Tank & Intermediate Pumping Station

Coordinate system: British National Grid; Datum: OSGB 1936
 Data sources: © Crown copyright and database rights 2026 Ordnance Survey 0100031673. Sources: Esri, TomTom, Garmin, FAO, NOAA, USGS, © OpenStreetMap contributors, and the GIS User Community, Contains British Geological Survey materials © UKRI 2026.

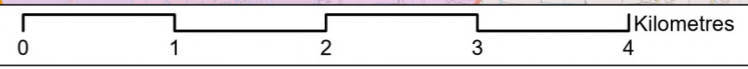
PROJECT TITLE
 Hampshire Water Transfer and Water Recycling Project



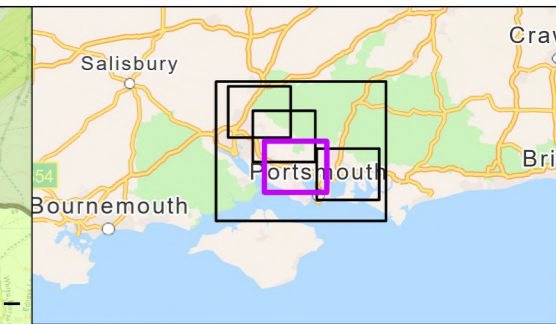
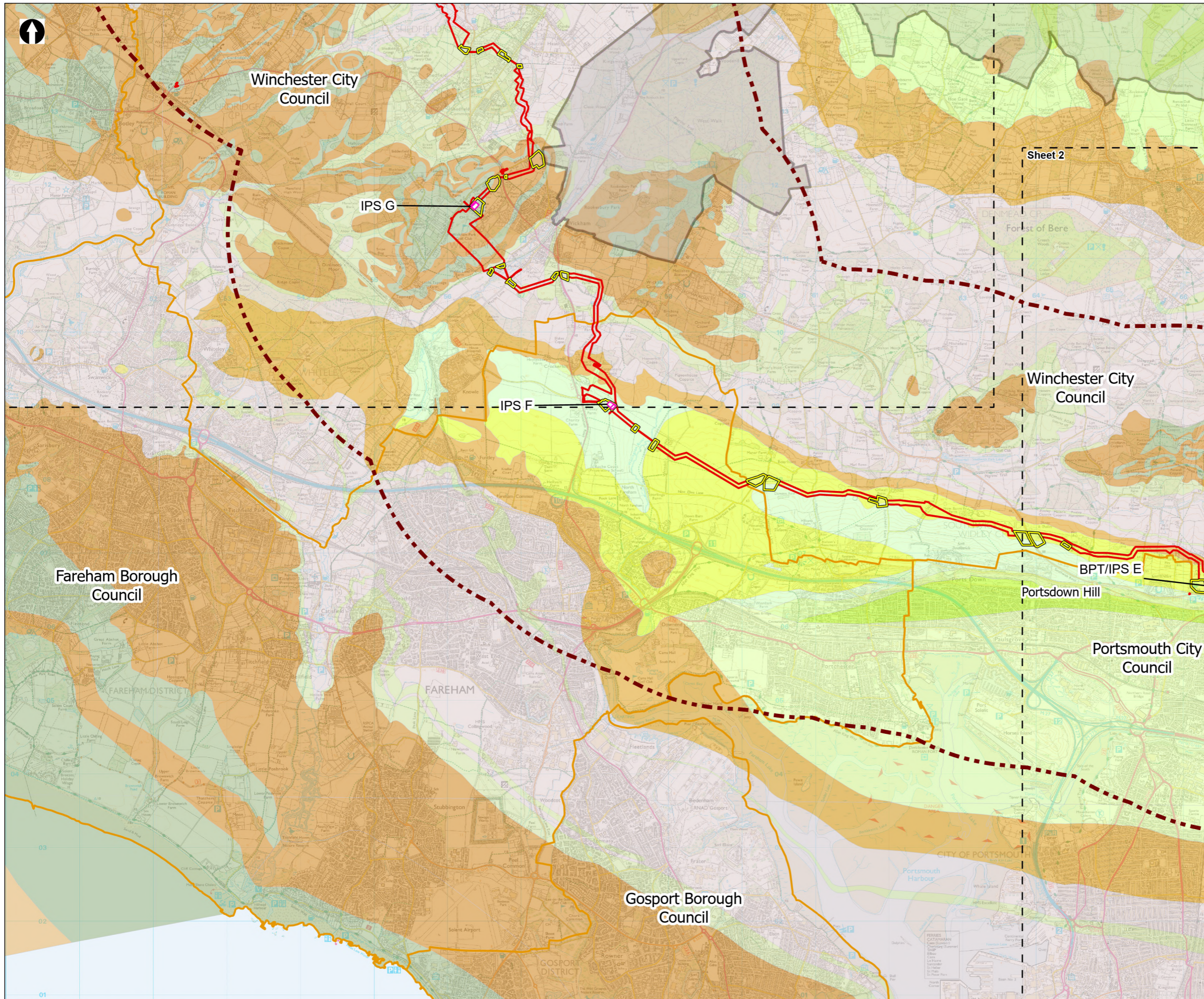
Figure 13.3
 Geology
 Sheet 2 of 5

Drawn DL	GIS Checked MW	Checked MP	Approved AK
Scale at A3 1:50,000	Status Final	Revision 05	Security STD

© Southern Water 2026
 This document is issued for the party which commissioned it and for specific purposes connected with the captioned project only. It should not be relied upon by any other party or used for any other purpose.
 We accept no responsibility for the consequences of this document being relied upon by any other party, or being used for any other purpose, or containing any error or omission which is due to an error or omission in data supplied to us by other parties.



Drawing Number
PC5223-RHD-ES-ZZ-D-Z-0130



- Order Limits
- Landscape Study Area 3km
- Sheet extent boxes 1:50k
- Local planning authorities
- South Downs National Park
- Construction compounds
- Bedrock Geology 1:50000**
- Lambeth Group - Clay, Silt and Sand
- Tarrant Chalk Member - Chalk
- London Clay Formation - Sand
- London Clay Formation - Clay, Silt and Sand
- Lambeth Group - Sand
- Bognor Sand Member - Sand
- Wittering Formation - Sand, Silt and Clay
- Wittering Formation - Sand
- Whitecliff Sand Member - Sand
- Portsdown Chalk Formation - Chalk
- Lewes Nodular, Seaford, Newhaven, Culver, Portsdown Chalk Formation
- Newhaven Chalk Formation
- Spetisbury Chalk Member - Chalk
- Lambeth Group - Clay, Silt and Sand
- Earnley Sand Formation - Sand, Silt, and Clay
- Seaford Chalk Formation - Chalk
- Durnley Sand Member - Sand
- Lewes Nodular Chalk Formation - Chalk
- Culver Chalk Formation - Chalk
- Nursling Sand Member - Clay, Silt and Sand
- Whitecliff Sand Member - Sand and Gravel
- Portsmouth and Whitecliff Sand Member - Sand
- Above Ground Plant**
- Break Pressure Tank & Intermediate Pumping Station
- Intermediate Pumping Station

Coordinate system: British National Grid; Datum: OSGB 1936
 Data sources: © Crown copyright and database rights 2026 Ordnance Survey 0100031673. Sources: Esri, TomTom, Garmin, FAO, NOAA, USGS, © OpenStreetMap contributors, and the GIS User Community, Contains British Geological Survey materials © UKRI 2026.

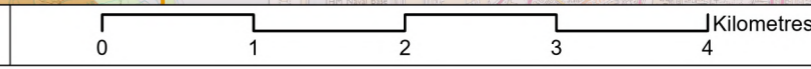
PROJECT TITLE
 Hampshire Water Transfer and Water Recycling Project



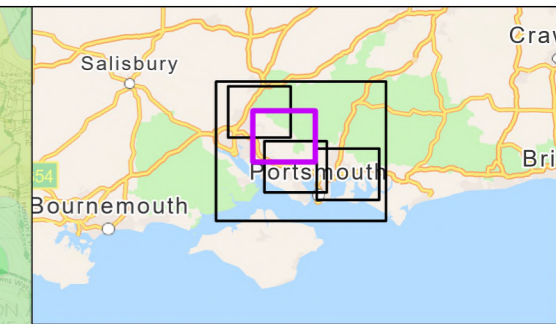
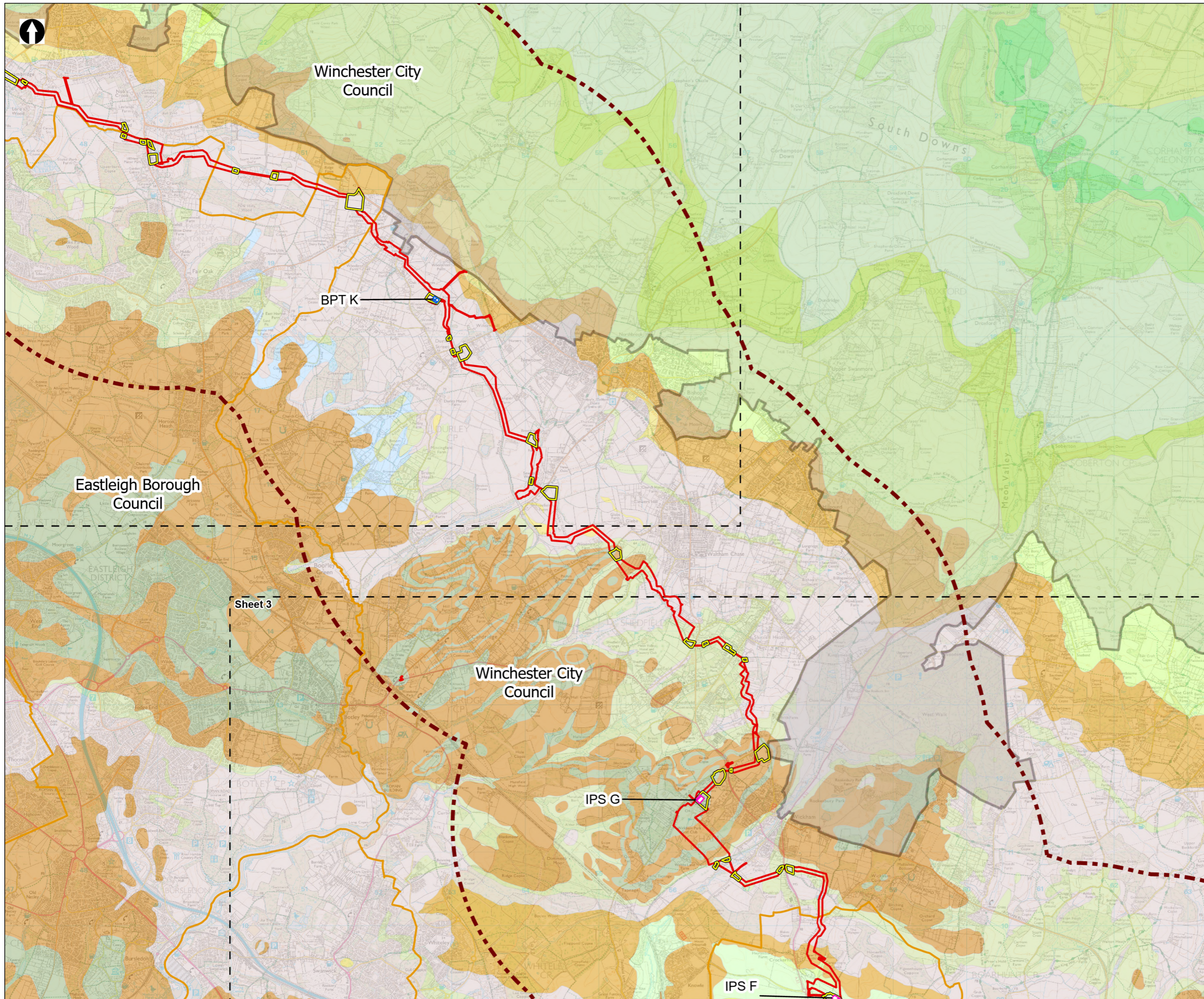
Figure 13.3
 Geology
 Sheet 3 of 5

Drawn DL	GIS Checked MW	Checked MP	Approved AK
Scale at A3 1:50,000	Status Final	Revision 05	Security STD

© Southern Water 2026
 This document is issued for the party which commissioned it and for specific purposes connected with the captioned project only. It should not be relied upon by any other party or used for any other purpose.
 We accept no responsibility for the consequences of this document being relied upon by any other party, or being used for any other purpose, or containing any error or omission which is due to an error or omission in data supplied to us by other parties.



Drawing Number
PC5223-RHD-ES-ZZ-D-Z-0130



- Order Limits
- Landscape Study Area 3km
- Sheet extent boxes 1:50k
- Local planning authorities
- South Downs National Park
- Construction compounds
- Bedrock Geology 1:50000**
- Lambeth Group - Clay, Silt and Sand
- Tarrant Chalk Member - Chalk
- London Clay Formation - Sand
- London Clay Formation - Clay, Silt and Sand
- Lambeth Group - Sand
- Bognor Sand Member - Sand
- Wittering Formation - Sand, Silt and Clay
- Wittering Formation - Sand
- Whitecliff Sand Member - Sand
- Portsdown Chalk Formation - Chalk
- Lewes Nodular, Seaford, Newhaven, Culver, Portsdown Chalk Formation
- Newhaven Chalk Formation
- Spetisbury Chalk Member - Chalk
- Lambeth Group - Clay, Silt and Sand
- Earnley Sand Formation - Sand, Silt, and Clay
- Seaford Chalk Formation - Chalk
- Durnley Sand Member - Sand
- Lewes Nodular Chalk Formation - Chalk
- Culver Chalk Formation - Chalk
- Nursling Sand Member - Clay, Silt and Sand
- Whitecliff Sand Member - Sand and Gravel
- Portsmouth and Whitecliff Sand Member - Sand
- Above Ground Plant**
- Break Pressure Tank
- Intermediate Pumping Station

Coordinate system: British National Grid; Datum: OSGB 1936
 Data sources: © Crown copyright and database rights 2026 Ordnance Survey 0100031673. Sources: Esri, TomTom, Garmin, FAO, NOAA, USGS, © OpenStreetMap contributors, and the GIS User Community, Contains British Geological Survey materials © UKRI 2026.

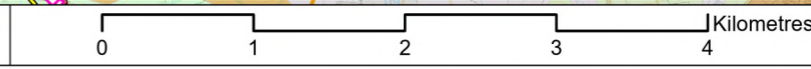
PROJECT TITLE
 Hampshire Water Transfer and Water Recycling Project



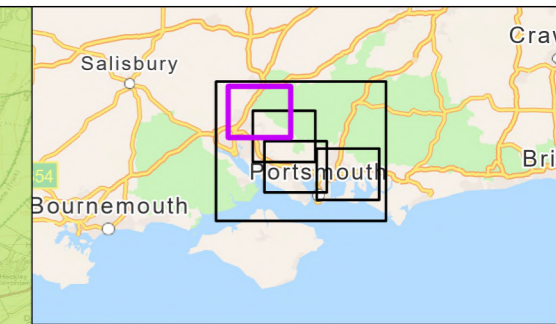
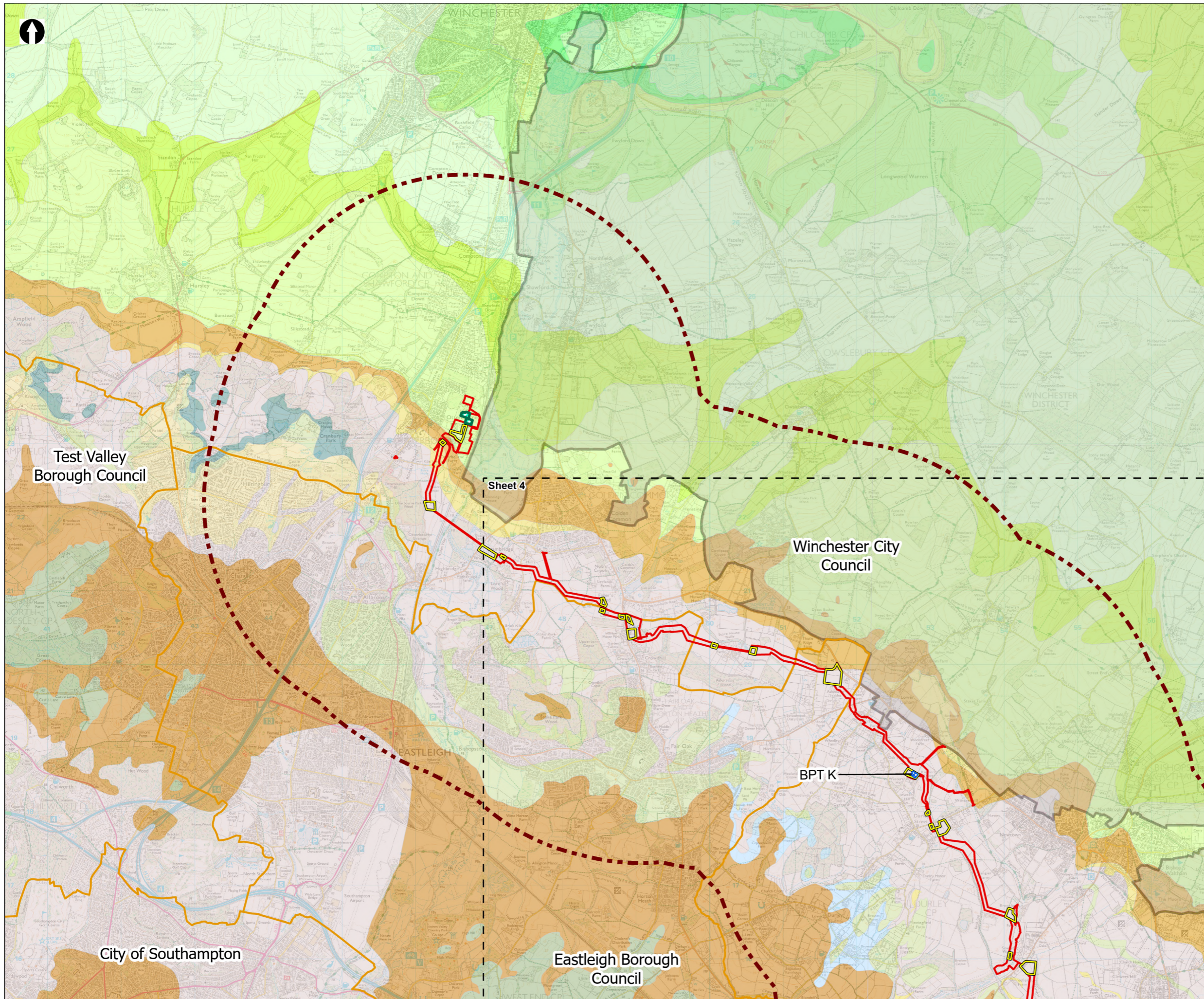
Figure 13.3
 Geology
 Sheet 4 of 5

Drawn DL	GIS Checked MW	Checked MP	Approved AK
Scale at A3 1:50,000	Status Final	Revision 05	Security STD

© Southern Water 2026
 This document is issued for the party which commissioned it and for specific purposes connected with the captioned project only. It should not be relied upon by any other party or used for any other purpose.
 We accept no responsibility for the consequences of this document being relied upon by any other party, or being used for any other purpose, or containing any error or omission which is due to an error or omission in data supplied to us by other parties.



Drawing Number
PC5223-RHD-ES-ZZ-D-Z-0130



- Order Limits
- Landscape Study Area 3km
- Sheet extent boxes 1:50k
- Local planning authorities
- South Downs National Park
- Construction compounds
- Limits of Deviation for Otterbourne INNS Treatment Plant
- Bedrock Geology 1:50000**
- Lambeth Group - Clay, Silt and Sand
- Tarrant Chalk Member - Chalk
- London Clay Formation - Sand
- London Clay Formation - Clay, Silt and Sand
- Lambeth Group - Sand
- Bognor Sand Member - Sand
- Wittering Formation - Sand, Silt and Clay
- Wittering Formation - Sand
- Whitecliff Sand Member - Sand
- Portsdown Chalk Formation - Chalk
- Lewes Nodular, Seaford, Newhaven, Culver, Portsdown Chalk Formation
- Newhaven Chalk Formation
- Spetisbury Chalk Member - Chalk
- Lambeth Group - Clay, Silt and Sand
- Earnley Sand Formation - Sand, Silt, and Clay
- Seaford Chalk Formation - Chalk
- Durnley Sand Member - Sand
- Lewes Nodular Chalk Formation - Chalk
- Culver Chalk Formation - Chalk
- Nursling Sand Member - Clay, Silt and Sand
- Whitecliff Sand Member - Sand and Gravel
- Portsmouth and Whitecliff Sand Member - Sand
- Above Ground Plant**
- Break Pressure Tank

Coordinate system: British National Grid; Datum: OSGB 1936
 Data sources: © Crown copyright and database rights 2026 Ordnance Survey 0100031673. Sources: Esri, TomTom, Garmin, FAO, NOAA, USGS, © OpenStreetMap contributors, and the GIS User Community, Contains British Geological Survey materials © UKRI 2026.

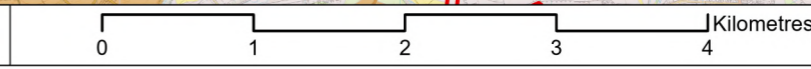
PROJECT TITLE
 Hampshire Water Transfer and Water Recycling Project



Figure 13.3
 Geology
 Sheet 5 of 5

Drawn DL	GIS Checked MW	Checked MP	Approved AK
Scale at A3 1:50,000	Status Final	Revision 05	Security STD

© Southern Water 2026
 This document is issued for the party which commissioned it and for specific purposes connected with the captioned project only. It should not be relied upon by any other party or used for any other purpose.
 We accept no responsibility for the consequences of this document being relied upon by any other party, or being used for any other purpose, or containing any error or omission which is due to an error or omission in data supplied to us by other parties.



Drawing Number
PC5223-RHD-ES-ZZ-D-Z-0130